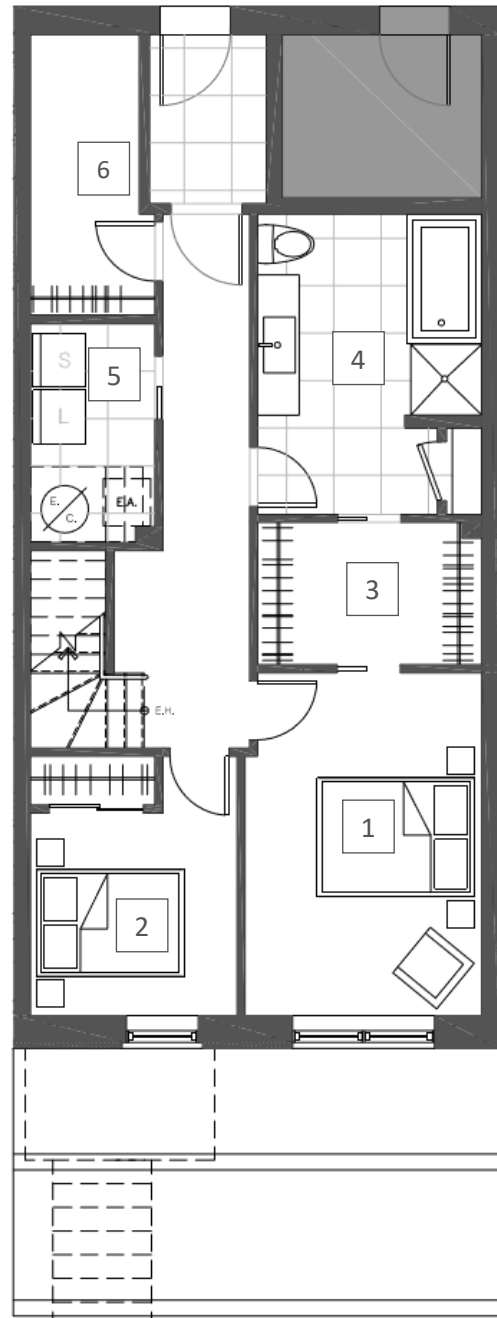
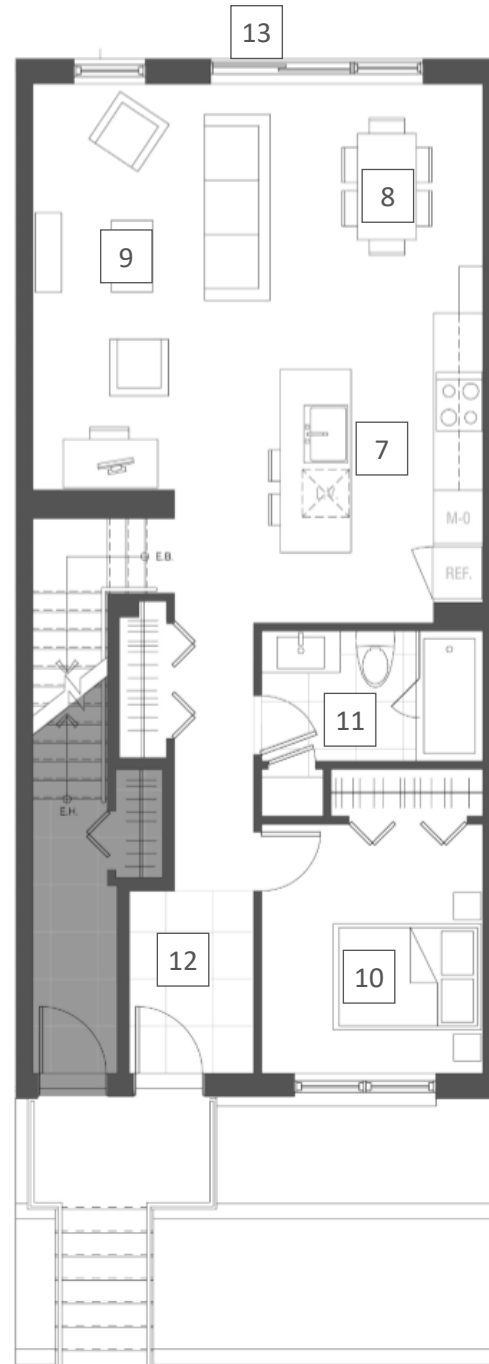


GARDEN LEVEL 821 ft²



MAIN FLOOR 820 ft²



PLAN A2 (lower) JAN 2018

A102 - A103 - B106 - B107 - C110 - C111 - D114
D115 - E118 - E119

- | | |
|--------------------------------|-----------------------------------|
| 1 10'-0" x 14'-6"
BEDROOM 1 | 8 9'-2" x 9'-9"
DINING ROOM |
| 2 8'-8" x 8'-6"
BEDROOM 2 | 9 10'-0" x 17'-11"
LIVING ROOM |
| 3 9'-5" x 6'-0"
WALK-IN | 10 9'-6" x 10'-7"
BEDROOM 3 |
| 4 9'-5" x 12'-8"
BATHROOM 1 | 11 9'-6" x 5'-6"
BATHROOM 2 |
| 5 5'-3" x 9'-3"
LAUNDRY | 12 5'-4" x 7'-10"
ENTRY |
| 6 4'-7" x 11'-11"
STORAGE | 13 13'-5" x 13'-6"
TERRACE |
| 7 9'-2" x 13'-2"
KITCHEN | |



580 St-Jean Boulevard
Pointe-Claire, Quebec
514-980-3545

Plans are subject to modifications without prior notice.
The areas and dimensions shown are approximate and may vary.