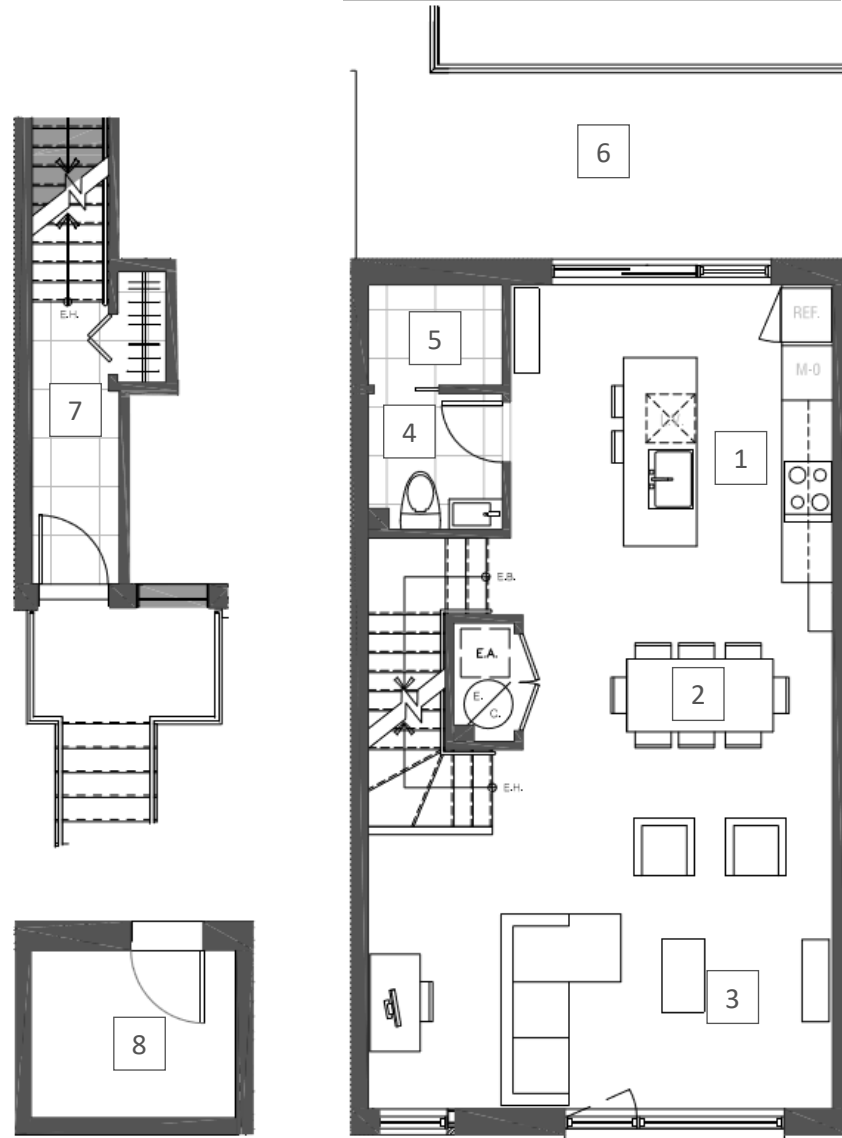
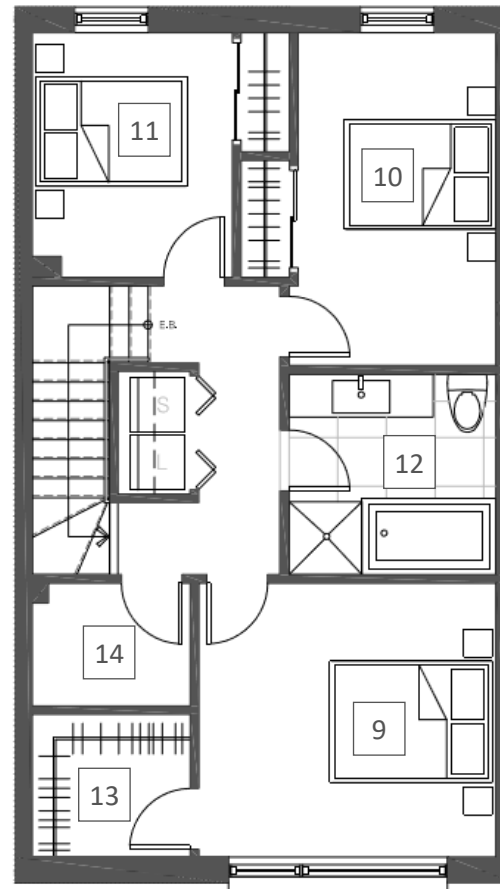


MAIN FLOOR 900 ft²



ATTIC 740 ft²



PLAN A2 (upper) JAN 2018

A202 - A203 - B206 - B207 - C210 - C211 - D214
D215 - E218 - E219

- | | |
|-----------------------------------|--------------------------------|
| 1 13'-3" x 12'-3"
KITCHEN | 8 8'-4" x 6'-11"
STORAGE 2 |
| 2 12'-10" x 10'-5"
DINING ROOM | 9 12'-3" x 11'-3"
BEDROOM 1 |
| 3 19'-2" x 11'-4"
LIVING ROOM | 10 8'-2" x 13'-8"
BEDROOM 2 |
| 4 5'-6" x 5'-7"
POWDER ROOM | 11 8'-3" x 10'-1"
BEDROOM 3 |
| 5 5'-6" x 4'-2"
STORAGE 1 | 12 8'-5" x 8'-3"
BATHROOM |
| 6 20'-4" x 7'-9"
BALCONY | 13 6'-6" x 5'-10"
WALK-IN |
| 7 3'-7" x 11'-7"
ENTRY | 14 6'-6" x 5'-0"
STORAGE 3 |



580 St-Jean Boulevard
Pointe-Claire, Quebec
514-980-3545

Plans are subject to modifications without prior notice.
The areas and dimensions shown are approximate and may vary.